

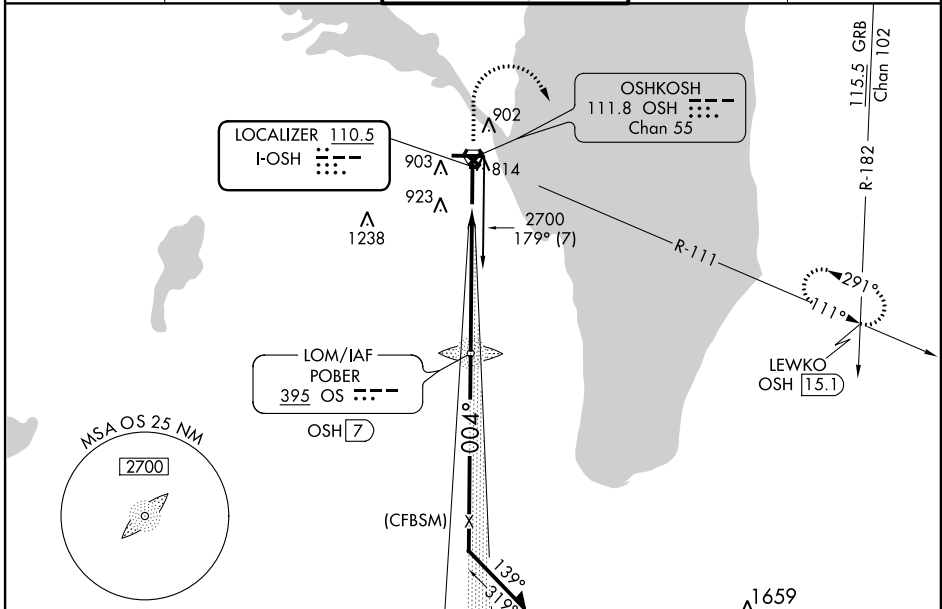
LOC I-OSH 110.5	APP CRS 004°	Rwy Idg 8002
		THRE 808
		Apt Elev 808

ILS or LOC RWY 36

WITTMAN RGNL (OSH)

<p>▽ When local altimeter setting not received, use Fond Du Lac altimeter setting and increase DA 31 feet and all MDA 40 feet; increase S-LOC 36 Cat C/D and Circling Cat C/D visibilities ¼ mile. For inop MALSRL when using Fond Du Lac altimeter setting, increase S-LOC 36 Cat C/D visibility to 1½ mile. Circling to Rwy 5, 23, and 31 NA at night. * RVR 1800 authorized with the use of FD or AP or HUD to DA.</p>	<p>MALSRL</p>	<p>MISSED APPROACH: Climb to 1300 then climbing right turn to 3000 on OSH R-111 to LEWKO INT/OSH 15 DME and hold.</p>
--	---------------	--

ATIS 125.9	MILWAUKEE APP CON 127.0 263.075	OSHKOSH TOWER ★ 118.5 (CTAF) 0 290.9	GND CON 121.9	UNICOM 122.95
----------------------	---	--	-------------------------	-------------------------



EC-3, 26 JUN 2014 to 24 JUL 2014

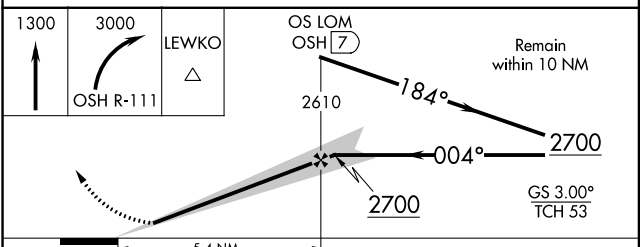
EC-3, 26 JUN 2014 to 24 JUL 2014

ELEV 808	THRE 808
----------	----------

REIL Rws 18 and 27
HIRL Rws 9-27 and 18-36

FAF to MAP 5.4 NM

Knots	60	90	120	150	180
Min:Sec	5:24	3:36	2:42	2:10	1:48



OS LOM OSH (Z)	2610	184°	2700	004°	2700	GS 3.00° TCH 53
CATEGORY	A	B	C	D		
S-ILS 36 *	1008/24 200 (200-½)					
S-LOC 36	1340/24	532 (600-½)	1340/55	532 (600-1¼)		
C CIRCLING	1340-1	532 (600-1)	1360-1½	552 (600-1½)	1440-2	632 (700-2)