

WAAS CH <b>65602</b> <b>W36A</b>	APP CRS <b>004°</b>	Rwy Idg THRE Apt Elev <b>8002</b> <b>808</b> <b>808</b>
----------------------------------------	------------------------	------------------------------------------------------------------------

# RNAV (GPS) RWY 36

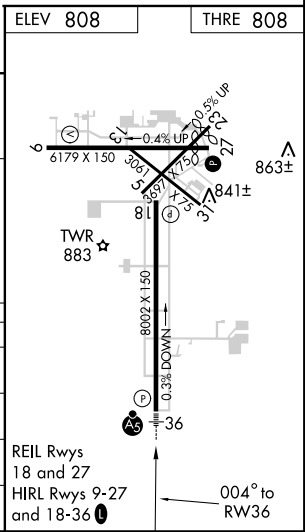
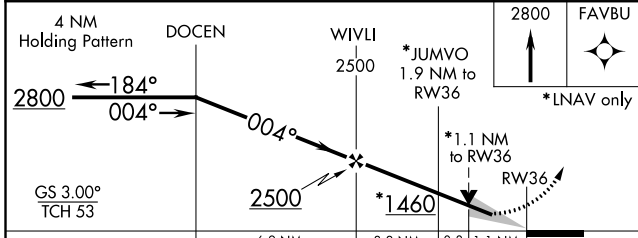
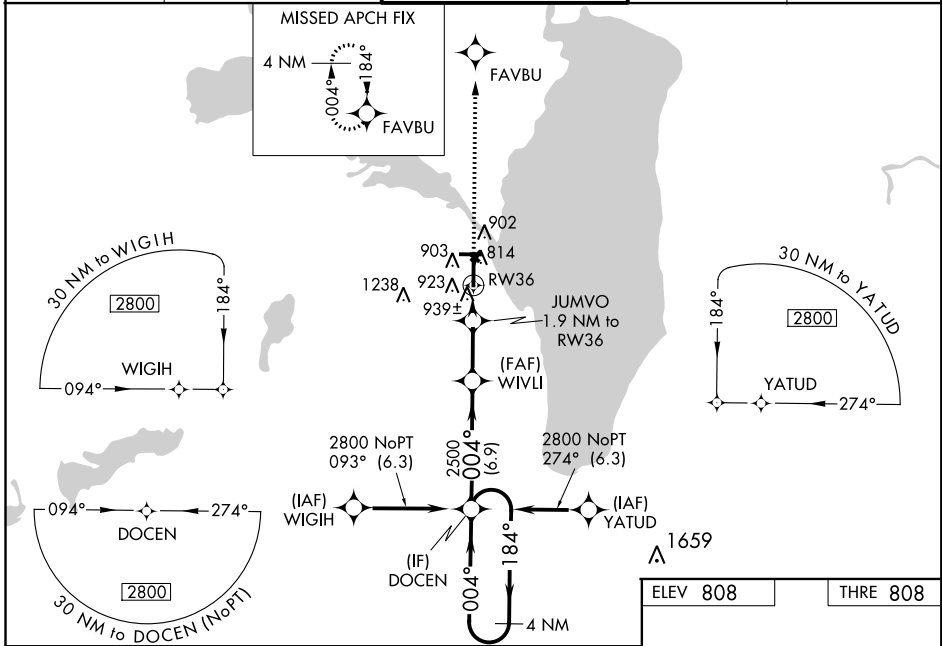
WITTMAN RGNL (OSH)

**⚠** For uncompensated Baro-VNAV systems, LNAV/VNAV NA below -20°C (-4°F) or above 54°C (130°F). DME/DME RNP-0.3 NA. When local altimeter setting not received, use Fond Du Lac altimeter setting and increase all DA 31 feet and all MDA 40 feet; increase LNAV/VNAV all Cats visibility to RVR 5600, increase LNAV Cat C/D visibility to RVR 4000, increase Circling Cat D visibility ¼ mile. For inop MALSR when using Fond Du Lac altimeter setting, increase LNAV/VNAV all Cats visibility to 1½ mile and LNAV Cats C/D to RVR 6000. Baro-VNAV and VDP NA when using Fond Du Lac altimeter setting. Circling to Rwy 3, 23 and 31 NA at night.

**MALSR**

**MISSED APPROACH:**  
Climb to 2800 direct FAVBU and hold.

ATIS <b>125.9</b>	MILWAUKEE APP CON <b>127.0 263.075</b>	OSHKOSH TOWER ★ <b>118.5 (CTAF) 290.9</b>	GND CON <b>121.9</b>	UNICOM <b>122.95</b>
----------------------	-------------------------------------------	----------------------------------------------	-------------------------	-------------------------



CATEGORY	A	B	C	D
LPV DA	1008/24		200 (200-½)	
LNAV/VNAV DA	1247/50		439 (500-1)	
LNAV MDA	1200/24	392 (400-½)	1200/35	392 (400-¾)
CIRCLING	1280-1 472 (500-1)	1300-1 492 (500-1)	1360-1½ 552 (600-½)	1440-2 632 (700-2)

EC-3, 26 JUN 2014 to 24 JUL 2014

EC-3, 26 JUN 2014 to 24 JUL 2014