

WAAS CH 86734 W09A	APP CRS 093°	Rwy Idg THRE 797 Apt Elev 808	6179
--	------------------------	--	-------------

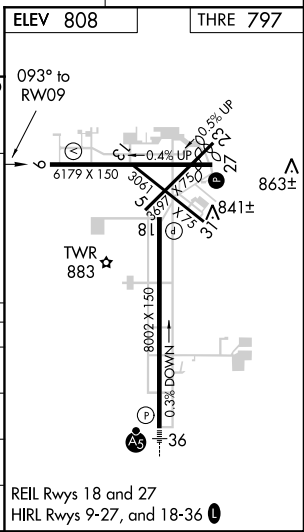
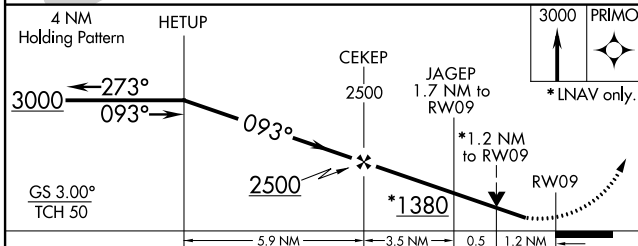
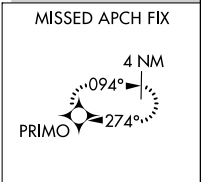
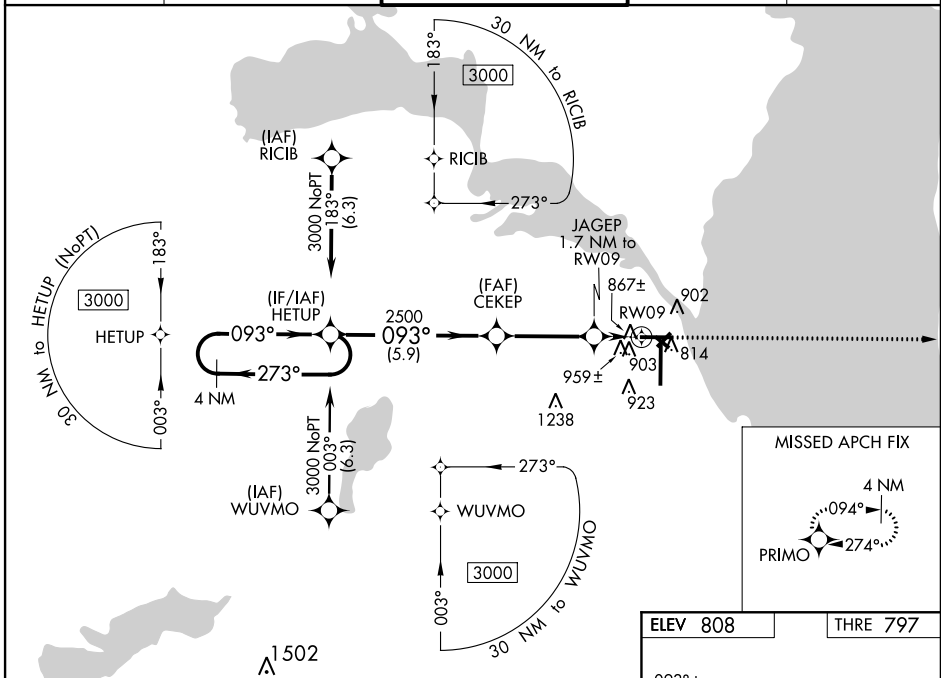
RNAV (GPS) RWY 9

WITTMAN RGNL (OSH)

⚠ Circling to Rwy 5, 23, 31 NA at night. For uncompensated Baro-VNAV systems, LNAV/VNAV NA below -20°C (-4°F) or above 54°C (130°F). DME/DME RNP-0.3 NA. VDP and Baro-VNAV NA with using Fond Du Lac County altimeter setting. When local altimeter setting not received, use Fond Du Lac altimeter setting and increase all DA 31 feet and all MDA 40 feet; increase LPV and LNAV/VNAV all Cats visibility and LNAV Cats C/D visibility 1/8 mile, increase Circling Cat D visibility 1/4 mile. Helicopter visibility reduction below 3/4 SM NA.

MISSED APPROACH:
Climb to 3000 direct PRIMO and hold.

ATIS 125.9	MILWAUKEE APP CON 127.0 263.075	OSHKOSH TOWER ★ 118.5(CTAF) 290.9	GND CON 121.9	UNICOM 122.95
----------------------	---	---	-------------------------	-------------------------



CATEGORY	A	B	C	D
LPV DA	1055-3/4		258 (300-3/4)	
LNAV/VNAV DA	1140-1 1/8		343 (400-1 1/8)	
LNAV MDA	1220-1	423 (500-1)	1220-1 1/4	423 (500-1 1/4)
C CIRCLING	1280-1 472 (500-1)	1300-1 492 (500-1)	1360-1 1/2 552 (600-1 1/2)	1440-2 632 (700-2)

REIL Rwy 18 and 27
HIRL Rwy 5-27, and 18-36

EC-3, 26 JUN 2014 to 24 JUL 2014

EC-3, 26 JUN 2014 to 24 JUL 2014