



INNOVATE

at the **HOME** of General Aviation



Wittman Regional Airport
Oshkosh

LAND HERE

Wisconsin is uniquely positioned to advance the global aerospace industry. Centrally located in the United States’ leading manufacturing and agricultural region, Wisconsin has become a national leader in design, engineering and production with a supply chain ready to serve new and growing companies.

In Wisconsin you will find productive collaboration between some of the nation’s top companies and our world-class university and technical college systems. These partnerships produce cutting-edge research and development in nanotechnology, engineering, power and control systems, and composite materials for the aerospace industry.

The result is a rapidly developing center of aviation and aerospace industry around which new business development opportunities are forming. The heart of aviation in Wisconsin is in Oshkosh, a globally recognized name associated with innovation and excellence. Now is your opportunity to be a part of this industry growth in a new Aviation Business Park located at Wittman Regional Airport...the home of general aviation.

OSHKOSH

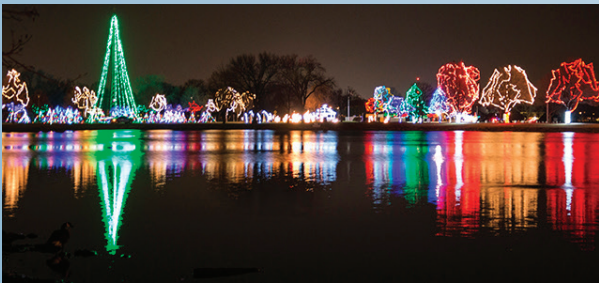
Oshkosh, Wisconsin’s Event City, is located on the western shore of Lake Winnebago in the east-central part of the state. The city hosts more than 1,000 events and welcomes more than one million visitors each year.

From gallery walks and farmer’s markets to major music festivals and the largest airshow in the world, EAA AirVenture, people flock to Oshkosh to be a part of the excitement and thrill that is found at all its events.

Beyond events, Oshkosh is surrounded by vast amounts of fresh water and natural beauty making it a destination for adventure seekers and outdoor enthusiasts. The historic downtown is home to eclectic and unique shops, restaurants and pubs. Near downtown, running along the Fox River, a beautiful Riverwalk creates a welcoming place to dock a boat, ride a bike or walk with friends.

Through four seasons, Oshkosh always has fun, family-friendly entertainment, an exciting nightlife and plenty of options to fit every budget. Recent development and new business have energized this “city on the water” making it a sought-after destination for living, working and playing.

Oshkosh is also close to: Road America, the Wisconsin Dells, the Fox Cities Performing Arts Center, Lambeau Field, Miller Park, the Milwaukee County Zoo, Milwaukee’s Museum Mile and much more.



65,267
Average Annual
Aircraft
Operations
(2013-2017)



THE AIRPORT

Wittman Regional Airport (KOSH), known to many simply as “Oshkosh,” is home to the Experimental Aircraft Association and its annual AirVenture aviation celebration. Owned and operated by Winnebago County, the airport is located two miles south of the central business district of Oshkosh, Wisconsin. Wittman has the infrastructure and facilities to accommodate aircraft from homebuilts up to some of the largest aircraft produced today. As a thriving mecca of aviation activity, Wittman is perfectly poised to welcome new and growing aviation and aerospace business.

AIRPORT DETAILS

Fixed Base Operator: Basler Flight Service

Air Traffic Control Tower: Midwest ATC Services, Inc.

RUNWAYS

18/36: 8,002' x 150' ILS, RNAV & VOR approaches

9/27: 6,179' x 150' RNAV & VOR approaches

5/23: 3,697' x 75'

13/31: 3,061' x 75'



1,450
Total Acreage

163
Based Aircraft



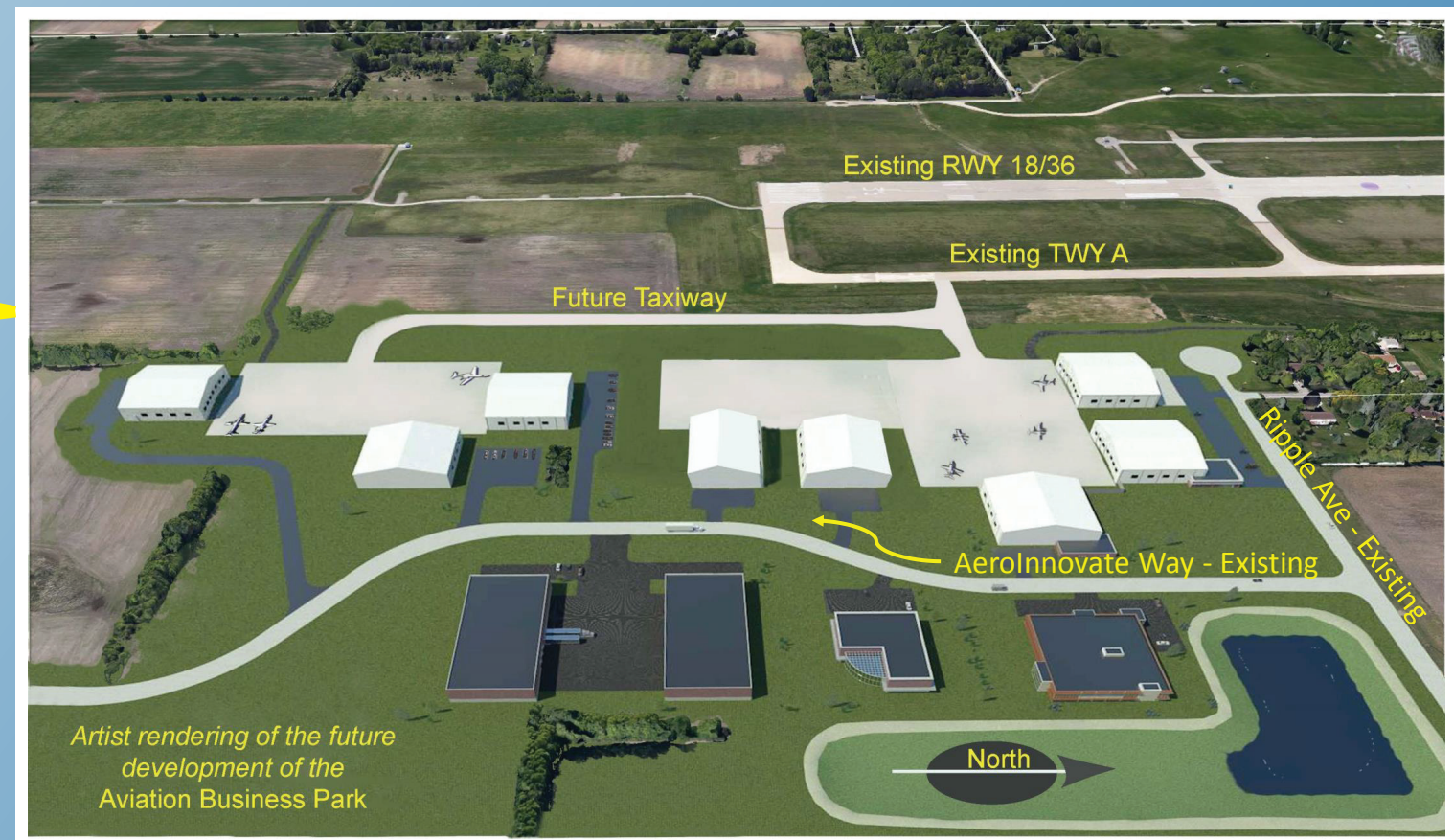
0600-2200
Daily
ATCT Hours

OSHKOSH AVIATION BUSINESS PARK

Wittman Regional Airport's 80-acre business park offers all the conveniences and brand recognition associated with being a part of “Oshkosh,” the world-recognized name in general aviation. The business park is a joint venture between Winnebago County and the City of Oshkosh and features completed infrastructure including AerInnovate Way, a heavy-truck-rated road with curbs and gutters, street lighting and all utilities. Located on the southeast side of the airport, the Oshkosh Aviation Business Park is the perfect location for innovative, aviation-focused companies to build their permanent home.

INCENTIVES:

- Sales-Tax Exemption for Aircraft Parts and Labor
- Wisconsin Manufacturing and Agriculture Tax credit - reduces Wisconsin corporate income taxes down to 0.4%
- Tax Incremental Financing District
- Revolving Loan Fund available
- Vocational training programs through Fox Valley Technical College
- Development ready lots with direct airport access
- Focus on aviation-related businesses
- Foreign Trade Zone designation available
- Lot size can be adjusted to meet any need
- Less than 2 miles from Interstate 41
- Close proximity to nationwide railway system



Aerospace in Wisconsin

UNIQUE AEROSPACE ASSETS

- EAA AirVenture – annually attracts over 500,000 people from 80 countries to Oshkosh.
- Large Rocket Engine Test Facility that includes two cells for ground testing of hybrid and liquid rocket engines with up to 50,000 pounds of thrust.
- Wisconsin Aerospace Authority (WAA) with the mission to facilitate aerospace-related education and economic opportunities.
- Restricted airspace over Lake Michigan available for special missions.
- Wisconsin ranks above the national average for employment concentration in 10 different professions related to aerospace.

#1

Fabricated Metal Products
Electrical Equipment

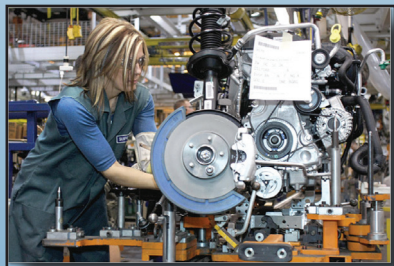
#2

Machinery
Plastics and Rubber Products



COST OF EMPLOYMENT

- Wisconsin wages are 15.1 percent lower than the national average.
- In Aerospace Product and Parts Manufacturing, the average annual wage in Wisconsin is 27.2 percent lower than the national wage.*
- Lower wages in Wisconsin come with the distinct advantage of having a highly skilled workforce.



EDUCATION

- Fox Valley Technical College (FVTC), a nationally recognized educational institution, has an aviation campus located on the field at Wittman Regional Airport.
- FVTC can create employer-specific educational programs to support new employee job training.
- Aerospace Engineers
- Wisconsin's system of colleges and universities offer multiple aerospace-related programs.



AVIATION AND AEROSPACE GROWTH

From 2001 to 2011, employment in Wisconsin's Aerospace Product and Parts Manufacturing sector grew by 56.6 percent. Projections through 2021 show steady growth in the following job positions (EMSI Covered Employment):

- Computer Software Engineers, Application
- Computer Hardware Engineers
- Aerospace Engineers
- Computer Software Engineers, Systems Software
- Industrial Engineers

For further information please contact Jim Schell, Airport Director at 920-236-4932
or via email at jschell@co.winnnebago.wi.us

www.wittmanairport.com